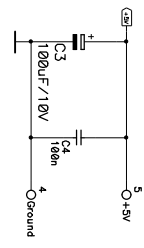
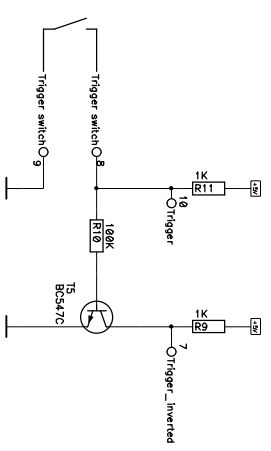
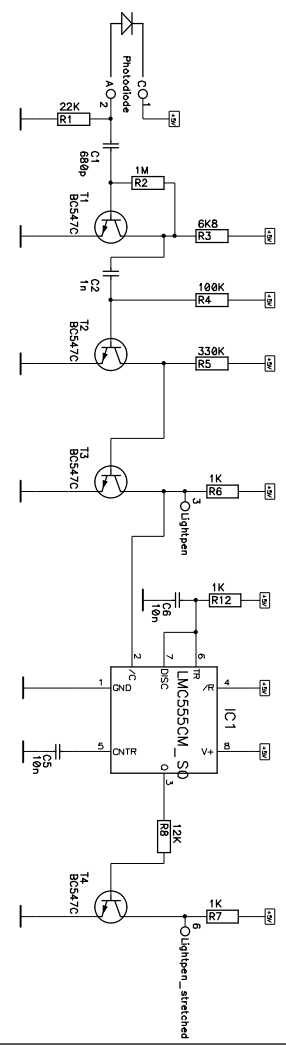


SCHEMATIC of PCB

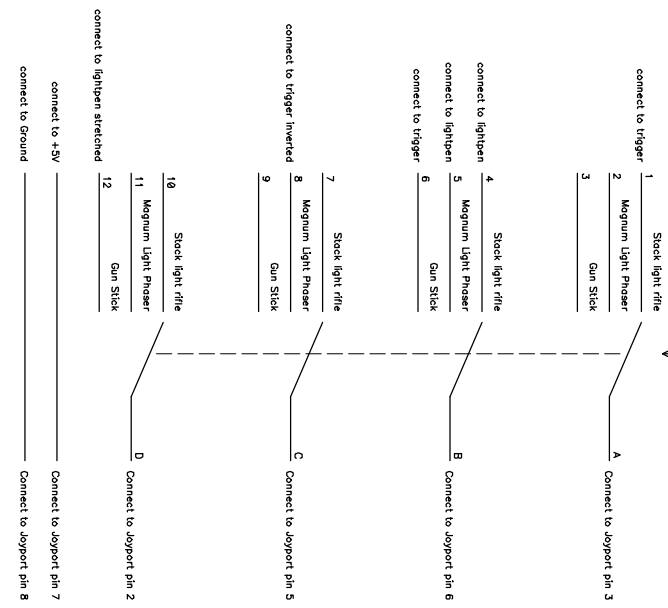


amplifier digitizer signal stretcher



Wiring between PCB, rotary switch and joyport connector

Rotary switch: 3 position, 4 pole
 08RLN-CR 027
 (formal order code: 1123689)



Photodiode:
 Basically only photo diode that can detect visible light and is fast enough to detect a pixel will substitute for a lightgun.
 Infrared photodiodes are not useable as TVs are designed to output visible light and not infrared.

C3:
 The capacitor C3 is to be placed on the PCB between +5V and GND.
 This capacitor has not been designed onto the PCB due to its size.
 So, it needs to be placed on the PCB wherever there is room left in the gun.
 It must be placed directly onto the PCB and NOT somewhere else using long wires!

Notes:
 The 3 in 1 gun is based on the Trojan lightgun design.
 The original gun used: 2N3904 for T1, T2 and the BC183 for T3.
 In Europe the BCS47 is more common and it has identical specs.

Title		3 in 1 gun for C64	
Size	Number	Rev	
A2	/	1.1	
Date	2015-02-01		Drawn by J.Derooghe
Filename	3in1gun.SCH		Sheet 1 of 1